

Description

Houdry is a leading manufacturer of electronics enclosures and industrial enclosures for a variety of applications, 3u 19 inch rackmount chassis manufacturer. We provide a wide range of enclosures : Plastic enclosure, Handheld enclosure, Aluminium enclosure, Diecast aluminium box, Stainless steel box, IP67 waterproof enclosure, Junction box, 19"rack mount enclosure, etc... China rack mount server chassis factory.

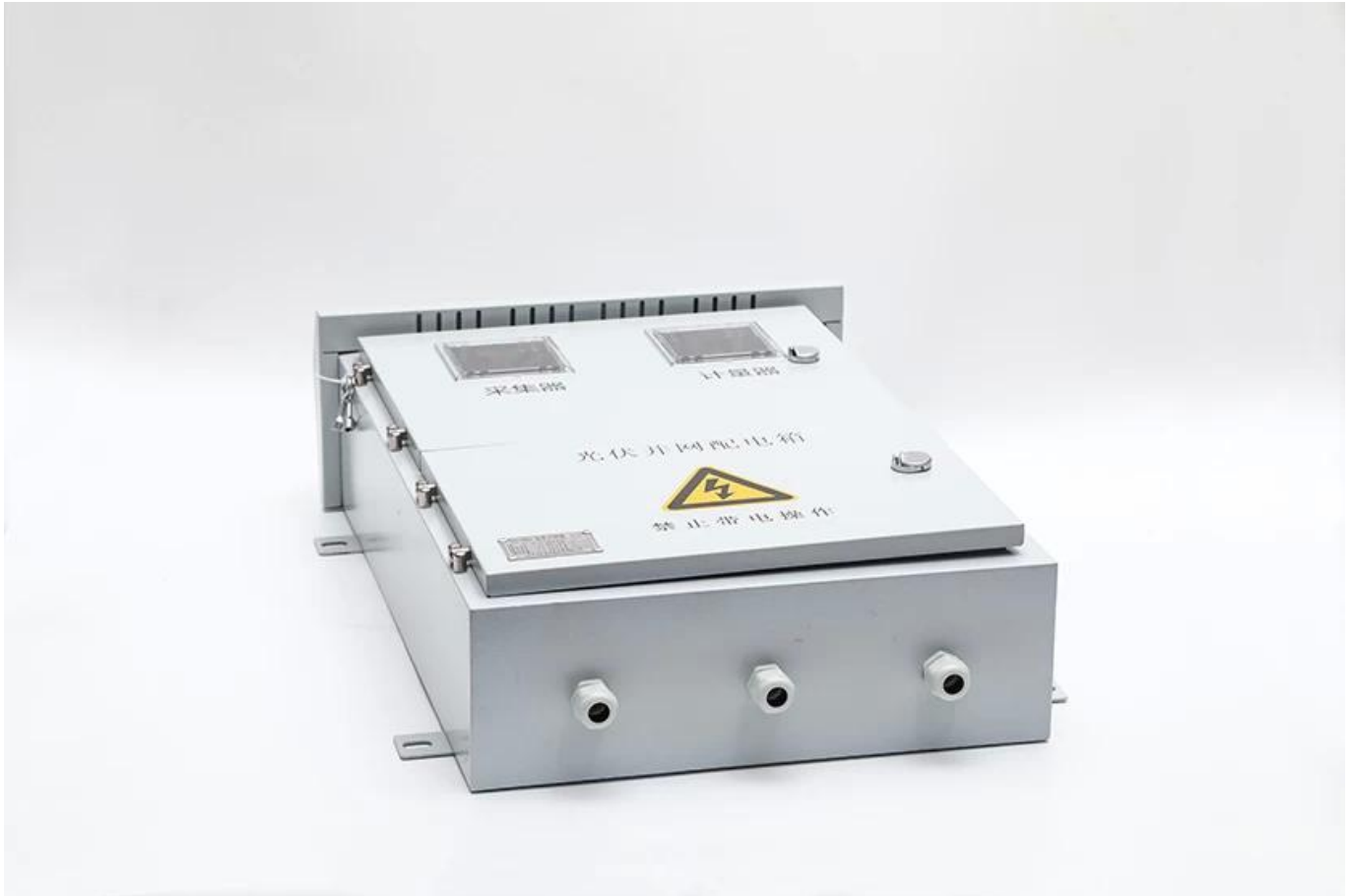
We also through ISO 9001, SGS certifications. Focusing on precision Sheet Metal Fabrication, Metal Stamping, and the production of CNC Machining parts. china supplier 4u rackmount chassis.

Specifications

| | |
|---------------------|---|
| Place of Origin | Jiangsu, China (Mainland) |
| Brand Name | HOUDRY |
| Model Number | Custom Made |
| Certificate | ISO9001:2015/SGS |
| Material | Stainless Steel/Iron/Aluminum |
| Fabrication Process | Stamping, Bending, Laser Cutting, Welding, Forging, Casting, Maching |
| Tolerance | ±0.1mm |
| Surface Treatment | Mirror Polishing, Powder Coat, Zinc Plate, Paint, Brushing as per drawing |
| Service | Custom OEM/ODM sheetmetal fabrication service |
| Supplier Type | Manufacturer/Fabrcicator/Factory/Designer |
| Package | Standard package/individual package for export or as requested |
| Delivery time | 7 - 20 working days or negotiable |

More Products





Company Introduction

Suzhou Houdry Mechanical and Electrical Technology Co., Ltd. is a manufacturing factory which engaged in sheet metal fabrication services since 2008. Now our factory covers 12,000 square meters, with 250 employees including 8 senior engineers and 10 quality engineers. Houdry has good cooperative with SIEMENS, AMADA, AMETEK, OERLIKON, etc. Annual value of \$16 million. Houdry can provide various of sheet metal fabrication service, such as sheetmetal stamping parts, laser cutting, cnc machining, welding, bending, forging, casting, etc.and surface treatments such as painting, anodize, power coating, zinc-plating etc.

Our sheet metal fabrication products are widely used in various areas such as cold chain products, net working products, bus air condition unit, invertor metal forming parts and track safety door part.

Our main customers are from overseas markets such as Germany, the United States, the United Kingdom, France, Singapore, and Sweden.



Our Factory

Our company can provide various of sheet metal fabrication service, such as sheetmetal stamping parts, laser cutting, cnc machining, welding, bending, forging, casting, etc.and mirror polishing, powder coat, zinc plate, paint, Brushing as per drawing.



Equipment

We have laser cutting machine, robot welding machine, bending machine, stamping machine, cnc machining centers, milling machine, grinding machine, injection mold machine and so on equipments. Can produce most metal products.



Laser Cutting Machine



Robot Welding Machine

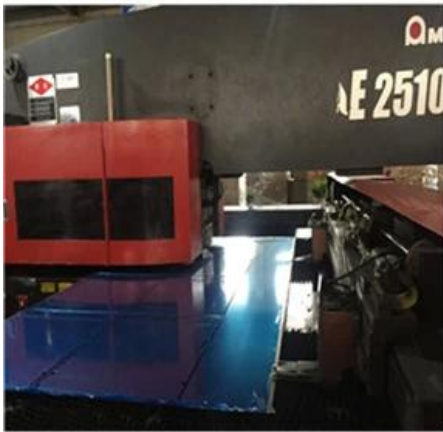


CNC Machine



Bending Machine

Production Process



1. Blank



2. Bending



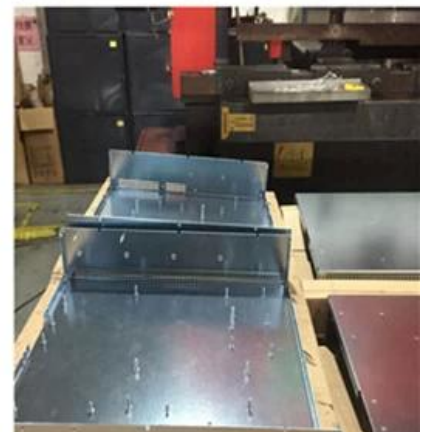
3. Plating



4. Riveting



5. Bending again



6. Forming

Our Package

Standard package/individual package for export or as requested. Sheet metal parts are usually packed in carton box, then packed in plywood pallets or plywood boxes.



FAQ

1. How can I get the quotation?

Please kindly send us the drawing of your product, details below should be included: materials, surface finish, tolerance, quantity. We will provide you with a product quotation within 2 working days! If you don't have a drawing, please send us the sample.

2. Do you provide samples? is it free or extra?

We can provide free sample. However, you have to pay the cost of courier by express like: DHL, TNT, UPS and FEDEX.

3. What is the process to place the order?

A. send us the drawings to get a free quotation.

B. we will make a sample for you to check the quality.

C. batch production will be proceed after sample is qualified and our service is accepted.

4. Do you support product customization?

Yes, all the customized orders are welcomed.

5. The surface treatment type we can handle?

Powder coating, paint, polish, brushed, galvanized, anodized. sand blasting.

6. What is the payment method?

Samples are paid via Paypal and T/T is 100% paid.

Bulk orders: T/T 30% prepaid, the balance should be paid before shipment.

7. Which Shipment way is available?

1. By sea to your nearest port. 2. By air to your nearest airport. 3. By express (DHL, UPS, FEDEX, TNT, EMS) to your door.