

Description

As a leading **China Sheet Metal Stamping Manufacturer** specializing in aluminum sheet metal forming, we stand out as a trusted partner for global industrial and commercial clients seeking top-tier metal fabrication solutions. Our facility functions as a professional [China CNC Sheet Metal Fabrication Factory](#), equipped with advanced 5-axis CNC machines, automated stamping lines, and precision laser cutting systems to deliver components with tight tolerances ($\pm 0.05\text{mm}$) for industries ranging from medical devices to office furniture (including height-adjustable desk frames) and senior-care equipment.

At the core of our offerings is [China Aluminum Sheet Metal Forming](#) capability, where we leverage high-quality 6061, 5052, and 3003 aluminum alloys to produce lightweight, corrosion-resistant parts. Whether it's complex bends, deep draws, or custom profiles for ☐☐☐☐ assistive devices or ergonomic workstation components, our engineering team combines decades of experience with CAD/CAM simulation to ensure each piece meets design specifications and performance standards.

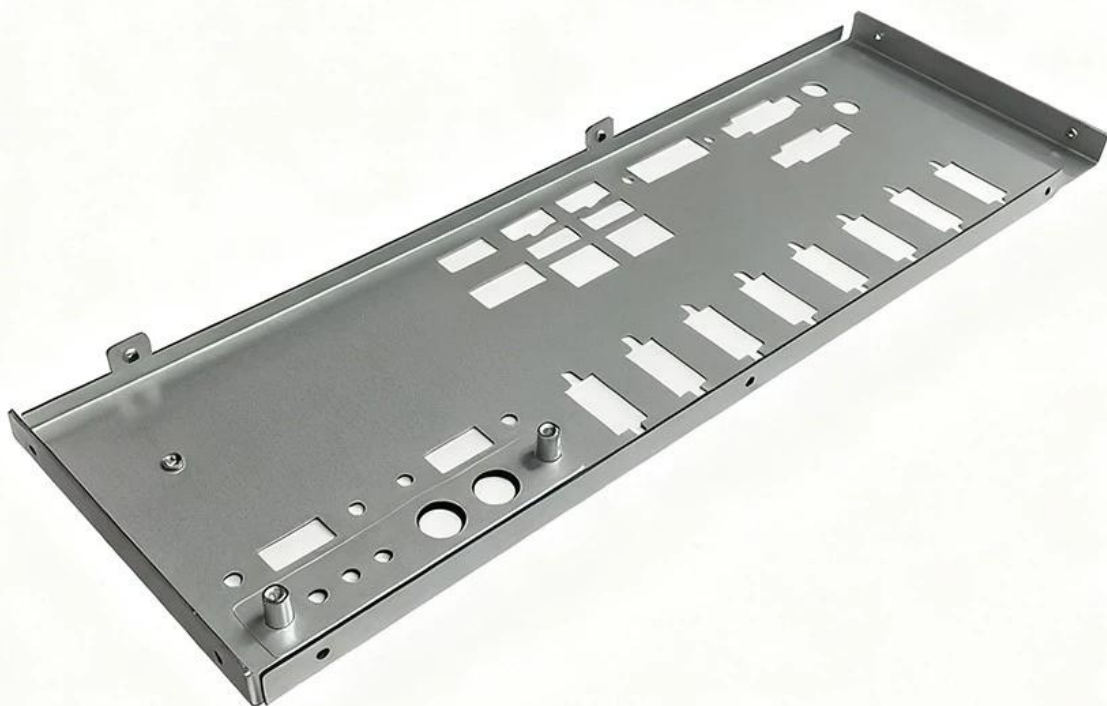
Beyond aluminum and standard sheet metal, we also operate as a reputable [China Heavy Steel Plate Fabrication Manufacturer](#), handling carbon steel, stainless steel, and alloy steel plates up to 50mm thick. Our heavy-duty press brakes, plasma cutters, and welding stations enable us to fabricate structural frames, industrial brackets, and load-bearing components for commercial and industrial infrastructure, all compliant with ISO 9001 and IATF 16949 quality certifications.

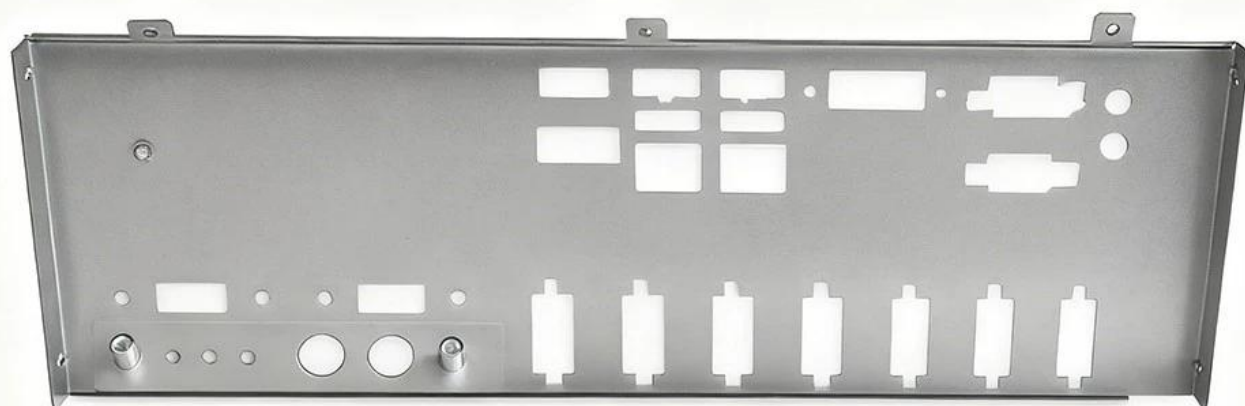
What sets us apart from other manufacturers is our end-to-end service: from initial prototyping and material selection to mass production, surface finishing (powder coating, anodizing, galvanization), and on-time global delivery. We prioritize open communication with B2B clients, offering flexible MOQs to accommodate both small-batch custom projects and large-scale OEM orders. Whether you need precision CNC sheet metal parts, aluminum formed components, or heavy steel fabrications, our factory has the capacity and expertise to turn your blueprints into reliable, cost-effective products.

Partner with us for your next metal fabrication project and experience the reliability of a China-based manufacturer that blends technical excellence, strict quality control, and customer-centric support.

Specifications

| | |
|---------------------|---|
| Place of Origin | Jiangsu, China (Mainland) |
| Brand Name | HOUDRY |
| Model Number | Custom Made |
| Certificate | ISO9001:2015/SGS |
| Material | Stainless Steel/Iron/Aluminum |
| Fabrication Process | Stamping, Bending, Laser Cutting, Welding, Forging, Casting, Maching |
| Tolerance | $\pm 0.1\text{mm}$ |
| Surface Treatment | Mirror Polishing, Powder Coat, Zinc Plate, Paint, Brushing as per drawing |
| Service | Custom OEM/ODM sheetmetal fabrication service |
| Supplier Type | Manufacturer/Fabicator/Factory/Designer |
| Package | Standard package/individual package for export or as requested |
| Delivery time | 7 - 20 working days or negotiable |







Company Introduction

Welcome to Houdry! We are a professional China sheet metal fabrication supplier. The factory is located in Suzhou, China, covering an area of **50,000 square meters**. We currently have four professional sheet metal manufacturing centers and a professional R&D base. The business scope is mainly precision molds, laser cutting, stamping, machining, bending, welding, spraying and other manufacturing processes.

Since its establishment in **2008**, the founder started a hard business with one machine and one worker. After nearly **20 years** of unremitting efforts, the company currently has a total of **405 employees**, including **30 R&D engineers**, **25 process engineers** and **8 quality engineers**.

Houdry has always been committed to providing customers with high-quality, high-precision and high-

efficiency sheet metal processing service solutions to meet all-round needs from prototype development to mass production. At present, Houdry customers are spread across more than **30 countries** around the world, and its products cover home appliances, furniture, medical, automotive and new energy fields.



Certificate

As a China stainless steel sheetmetal fabrication supplier, Houdry is well aware that excellent quality, rigorous process and responsibility for the environment and safety are the core of sustainable development.

The following are the main international certifications and recognitions we have obtained:



ISO9001:2015



IATF16949:2016



ISO13485:2016



ISO9001:2015



ISO14001:2015



CE



UL



ROSH

Equipment

We have laser cutting machine, robot welding machine, bending machine, stamping machine, cnc machining centers, milling machine, grinding machine, injection mold machine and so on equipments. Can produce most metal products.

8 Punching Machines



20 Welding Stations



10 CNC Bending Machines



5 CNC Stamping Machines



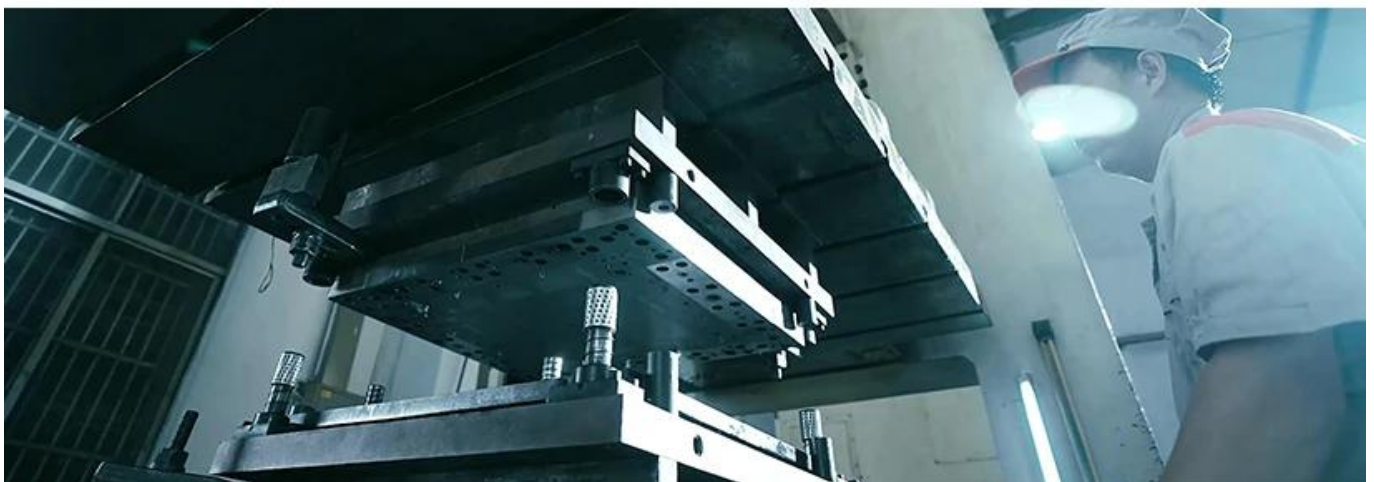
2 Spraying Lines



5 Laser Cutting Machines



Testing equipment



Package and Shipping

Standard package/individual package for export or as requested. Sheet metal parts are usually packed in carton box, then packed in plywood pallets or plywood boxes.





FAQ

1. What is your typical lead time for sheet metal fabrication projects?

Standard lead times range from 5-15 business days after design approval, depending on project complexity, material availability, and order volume. Rush services may be available for urgent requests—contact our team for expedited options.

2. What materials do you work with for sheet metal fabrication?

We process a wide range of materials, including: • Mild Steel • Stainless Steel (304/316) • Aluminum (5052, 6061) • Copper • Brass • Galvanized Steel Custom material requests can be accommodated—inquire for specific alloys or thicknesses.

3. What file formats do you accept for part design?

We prefer industry-standard formats for seamless processing: • Preferred: .STEP, .IGES, .DXF/DWG (2D drawings) • Accepted: .SLDPRT, .PDF (with dimensions) Design support (DFM feedback) is available upon request to optimize manufacturability.

4. How do you ensure quality control in your fabrication process?

All parts undergo rigorous quality checks, including: • In-process inspections • Dimensional verification (with CMM/laser scanning) • Surface finish review • Final compliance with ISO 9001 standards Certified material test reports (MTRs) and inspection documentation are provided upon request.

5. Do you offer design for manufacturability (DFM) feedback?

Yes! We provide complimentary DFM analysis to reduce costs, improve functionality, and streamline production. Share your design files with our engineering team for actionable recommendations on material selection, tolerances, bend radii, and efficiency optimizations.