

## Elektrisch staand bureauframe, in hoogte verstelbaar bureauframe, zit-sta bureauframe

### DE PARAMETERS VAN STAAND BUREAU

productnaam	Elektrisch in hoogte verstelbaar sta-bureau
Invoer Voltage	AC 90-240V kan gebruiken
uitgang Voltage	DC 24V
Dynamische belasting (KG)	120
Statische belasting (KG)	140
Laadsnelheid (mm / s)	30
Arbeidscyclus	10% max. 2 min., Continu gebruik
Hefbereik	620-1270mm
Lengtebereik	1100-1600mm
Kleur	Zwart, Wit, Greeny of optie
Buismateriaal	Koolstofstaal Q235, oppervlak:Poeder bedekt
Certificaat	CE, UL, E <sub>0</sub> , <b>ROHS</b>
Pakket Sikze per reeks	1080 * 270 * 325 mm
Netto Gewicht per reeks	41kg
Bruto gewicht per reeks	45kg
Aantal motoren	TWEE
Voorzien zijn van:	Schakelvoeding, laag energieverbruik, handmatig apparaat kan bewegen en lang indrukken, ingebouwde eindschakelaar.

Staand bureau foto:



## A6 Series

Perfect the details of the design  
Limit switch in the columns and different controlner  
Exclusive patent design for details  
More convenient to tear open outfit  
Capacitive Touch screen memory handset, Apple LCD



Meer zit-sta-bureaus



A6 series

The appearance of the more beautiful  
 2 legs / 2 motors  
 Electric adjustable  
 Super mute motor synchronization control system  
 Colours can choose Frosted Black or Frosted White  
 Overload and overheat protection  
 The switch can press point move and press always move

High quality cold-rolled steel plate, the structure is strong  
 A number of patented technology

Voltage: 110 VAC / 220 VAC  
 Gross weight: 38KG

Lifting range from 580mm-1240mm  
 Can use desktop from 1100mm-1600mm  
 Load capacity: 100kg / 225lbs  
 Load Speed: 30mm/s

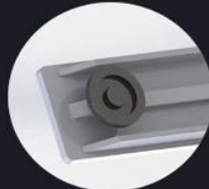
5 Advantage



Out Tube size can be 90mmX60mm



Control box installation: Plug type  
 Patent design, It is more convenient



Foot to strengthen



Motor metal case Ultra-thin design



Control box patent design, Ultra-thin, small  
 Switching power supply  
 Metal case, have qualitative feeling

Application

