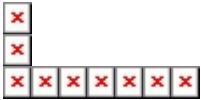


# Cheap Stand Up Desk Adjustable Height ,Height Adjustable Standing Desk

## THE PARAMETERS OF STANDING DESK

Product Name	Electric Height Adjustable Standing Desk
Input Voltage	AC 90—240V can use
Output Voltage	DC 24V
Dynamic Load (KG)	120
Static Load (KG)	140
Load Speed (mm/s)	30
Duty Cycle	10% max 2 min, continuous use
Lift Range	620-1270mm
Length Range	1100-1600mm
Color	Black, White, Gray or option
Tube Material	Carbon Steel Q235, Surface :Powder coated
Certificate	CE, UL,E0 , <b>ROHS</b>
Package Size per set	1080*270*325mm
Net Weight per set	41KG
Gross Weight per set	45KG
Motors Number	TWO
Feature:	Switch power supply , low energy consumption ,manual device can move and long press ,built-in limit switch.

Standing desk picture:





A6 series

The appearance of the more beautiful  
 2 legs / 2 motors  
 Electric adjustable  
 Super mute motor synchronization control system  
 Colours can choose Frosted Black or Frosted White  
 Overload and overheat protection  
 The switch can press point move and press always move

High quality cold-rolled steel plate, the structure is strong  
 A number of patented technology

Voltage: 110 VAC /220 VAC  
 Gross weight: 38KG

Lifting range from 580mm-1240mm  
 Can use desktop from 1100mm-1600mm  
 Load capacity: 100kg / 225lbs  
 Load Speed: 30mm/s

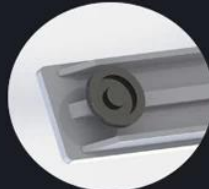
5 Advantage



Out Tube size can be 90mmX60mm



Control box installation: Plug type  
 Patent design,It is more convenient



Foot to strengthen



Motor metal case Ultra-thin design



Control box patent design, Ultra-thin,small  
 Switching power supply  
 Metal case,have qualitative feeling

Application

