

此項產品之規格與圖樣如有變更，恕不另行通知，特此聲明。

此項產品之規格與圖樣如有變更，恕不另行通知，特此聲明。

產品名稱	此項產品之規格與圖樣如有變更，恕不另行通知，特此聲明。
工作電壓	90-240V AC
控制電壓	24V
淨重 (KG)	120
毛重 (KG)	140
包裝尺寸 (長/寬/高)	30
材料	10% 鋁合金 2 號，其餘為鋼材
表面處理	620-1270mm
尺寸	1100-1600mm
塗層	噴漆，電鍍，噴漆等
材料	鋼材 Q235，塗層：噴漆等
認證	CE, RoHS
包裝尺寸 (長*寬*高)	1080 * 270 * 325 mm
淨重	41kg
毛重	45 kg
包裝	木箱
備註:	此項產品之規格與圖樣如有變更，恕不另行通知，特此聲明。

此項產品之規格與圖樣如有變更，恕不另行通知，特此聲明。



A6 Series

Perfect the details of the design
Limit switch in the columns and different controlner
Exclusive patent design for details
More convenient to tear open outfit
Capacitive Touch screen memory handset, Apple LCD



□□□□ □□□□ □□□□ □□□□



A6 series

The appearance of the more beautiful
 2 legs / 2 motors
 Electric adjustable
 Super mute motor synchronization control system
 Colours can choose Frosted Black or Frosted White
 Overload and overheat protection
 The switch can press point move and press always move

High quality cold-rolled steel plate, the structure is strong
 A number of patented technology

Voltage: 110 VAC /220 VAC
 Gross weight: 38KG

Lifting range from 580mm-1240mm
 Can use desktop from 1100mm-1600mm
 Load capacity: 100kg / 225lbs
 Load Speed: 30mm/s

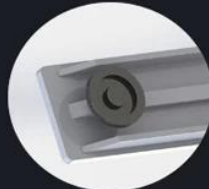
5 Advantage



Out Tube size can be 90mmX60mm



Control box installation: Plug type
 Patent design,It is more convenient



Foot to strengthen



Motor metal case Ultra-thin design



Control box patent design, Ultra-thin, small
 Switching power supply
 Metal case, have qualitative feeling

Application





