

**Product include**

varieties of metal stamping parts, metal press stamping parts, metal welding parts, metal drawing parts, metal punch parts, CNC Metal parts, CNC metal machining parts, CNC metal machined parts, CNC metal milling aluminum parts, CNC metal turning stainless steel parts, Metal chassis, metallic cabinets, metal cabinets, metal cases, metal enclosures, metal boxes metallic machinery casing, metallic communication products, metallic auto parts, metallic refrigerator parts, metallic washing machine parts, vending machine shell fabrication, communication cabinet fabrication, mold designing making and so on.

**Packing**

Inner packing : polybag ;

Outer packing : export cartons ;

Customized packing available .

**Delivery**

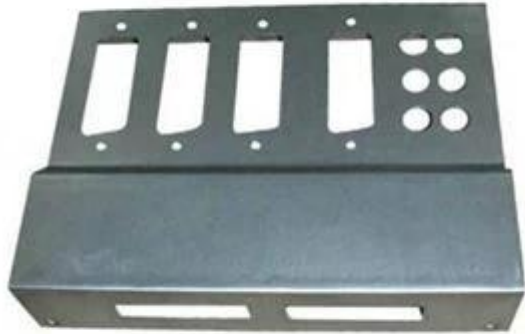
By sea or by air;the delivery date is according to specific orders

Usually within 30 days after receiving 30% down payment

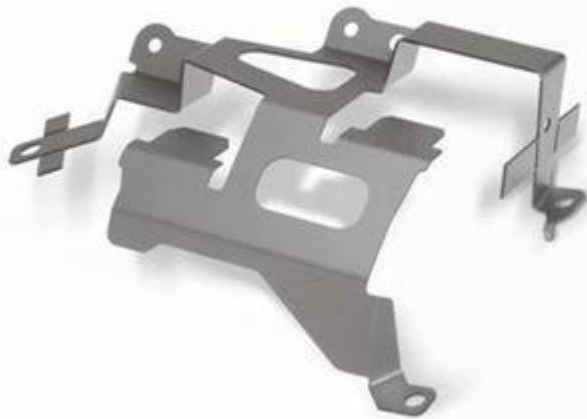
**Payment**

First order:T/T 30% in advance, T/T 70% against copy of B/L or L/C





[www.sheetmetal-fabrication.com](http://www.sheetmetal-fabrication.com) [www.houdry.com.cn](http://www.houdry.com.cn)



[www.sheetmetal-fabrication.com](http://www.sheetmetal-fabrication.com) [www.houdry.com.cn](http://www.houdry.com.cn)



[www.sheetmetal-fabrication.com](http://www.sheetmetal-fabrication.com) [www.houdry.com.cn](http://www.houdry.com.cn)



[www.sheetmetal-fabrication.com](http://www.sheetmetal-fabrication.com) [www.houdry.com.cn](http://www.houdry.com.cn)