



苏州颢德瑞机电科技有限公司

Suzhou Houdry Mechanical&Electrical Technology Co.,Ltd

Tel:0512-66212961

<http://www.houdry.com.cn>

Fax.:0512-66212961

E-mail:houdry@houdry.com.cn

tony@houdry.com.cn

sales1@houdry.com.cn

sales2@houdry.com.cn

sales3@houdry.com.cn

sales4@houdry.com.cn



经营理念： 品质至上 诚信服务
持续创新 贡献社会

Management Idea: Quality first
Integrity services
Continuous innovation
Feedback society



一、公司简介 Company profile

公司名称：苏州颢德瑞机电科技有限公司

Company Name:Suzhou Houdry Mechanical&Electrical Technology Co.,Ltd

公司地址：苏州市吴中区胥口镇茅蓬路958号

Company Address:No.958 Maopeng Road,Xukou Town,Wuzhong District,
Suzhou City

地理位置：公司座落于山清水秀，风景秀美的太湖之滨，紧临国家级太湖旅游度假区，灵岩山风景区和苏州高新技术开发区，交通发达，通讯便捷。

Location : The company is located in a beautiful scenery of Taihu lake,close to the national tour of Taihu tour resort, Lingyan mountain scenic area and the Suzhou High-tech Development Zone, the traffic developed, convenient communication.



公司员工：200名，其中工程技术人员16名，品质管理人员18名，焊接专业人员15名，具有较强自行设计和开发能力。

Company staff: There are 200 employees in the company, 16 engineering and technical personnel, 18 quality management personnel. 15 welding professional personnel, it has a strong design and development capability.

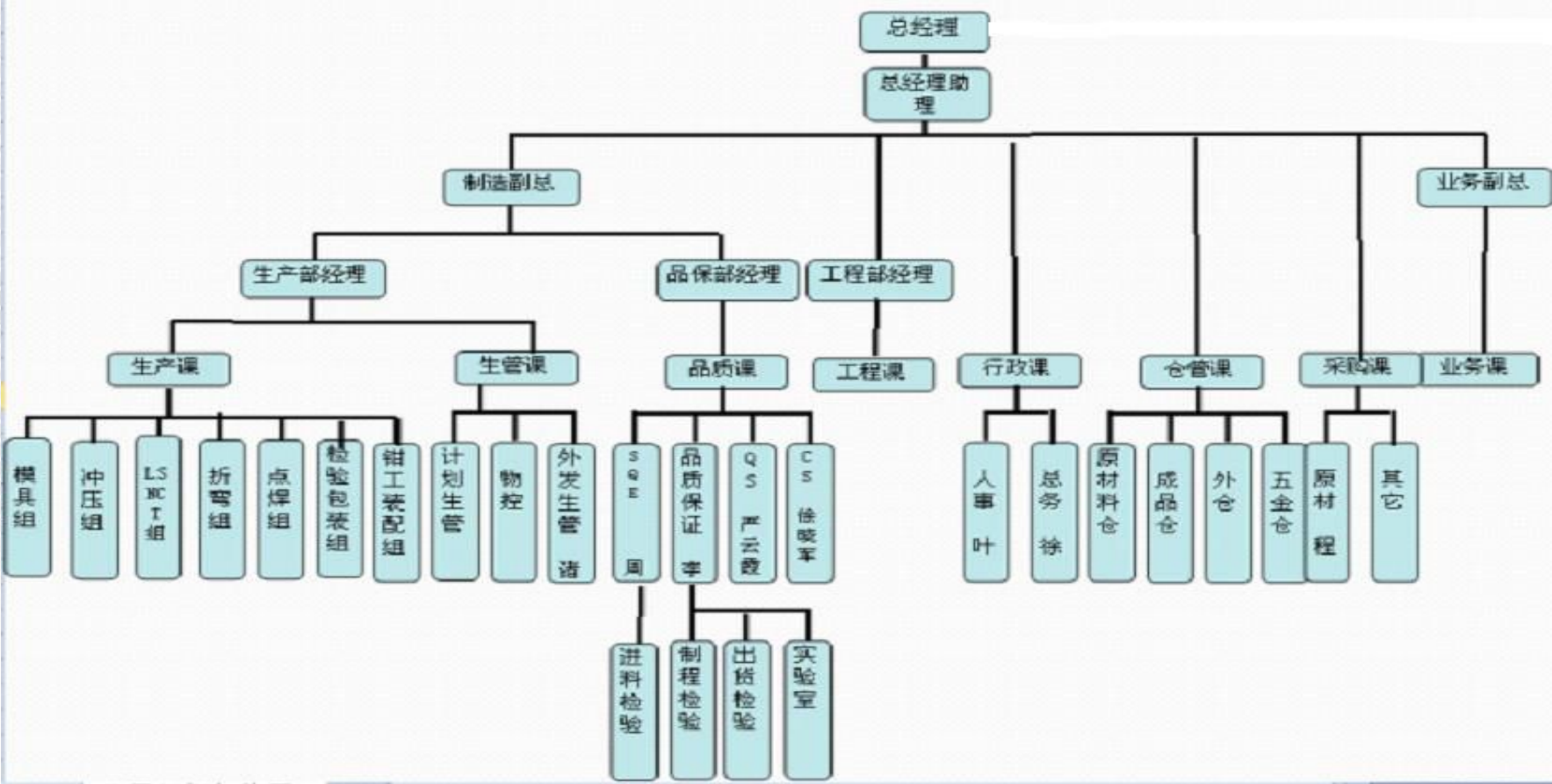
厂房及总投资：公司占地面积20000平方米，厂房面积12000平方米，总投资5000万元人民币

Plant and the total investment: The company covers an area of 20,000 square meters, plant area of 12,000 square meters with 50,000,000 yuan total investment.



Organizational chart of Houdry

苏州繁丰机电有限公司组织结构图



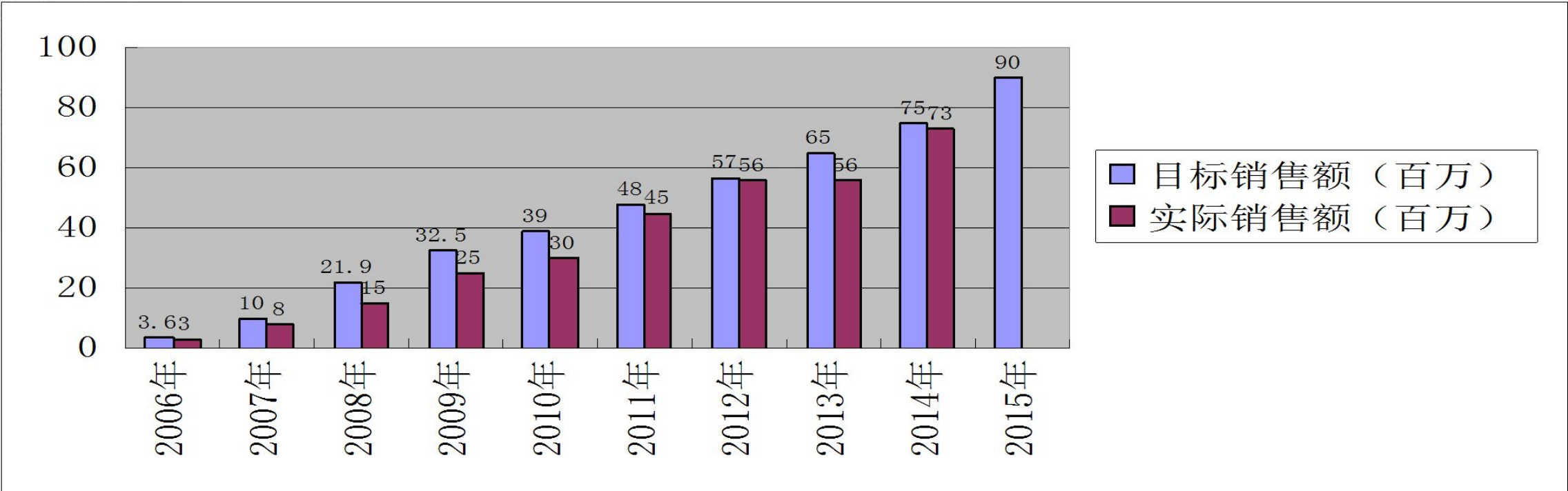


销售营业额目标 Sales target

我司2014年的目标销售额为7500万（仅限苏州颢德瑞机电科技有限公司，不包含家族其他企业），预计2015年的目标销售额为9000万人民币，设备产能达到1.3亿人民币。

2014 sales target is 7500 million (only fan Feng, does not contain other family enterprise), is expected in 2015 sales goal of 9000million yuan, equipment capacity reached 13000 million yuan.

历年的目标销售额和实际销售额的对比见下图：Comparison of past year sales target and actual sales below:





Key Customers



Key Customers



FASTAR



Vacuum Cleaner Components



Certification & Recognition

Certification



ISO9001:2008 Certificate



Certification & Recognition



Certification



Obtained Patents
公司专利



二、设备介绍 Equipments introduction

设备类型	Equipment Type	Equipment Brand	Quantity
激光切割机	Laser Cutting		预计2015年增加
激光切割机	Laser Cutting	Amada 4 KW	1
数冲机床	NCT Punching	Amada AC2510	4
数冲机床	NCT Punching	Yangli	2
折弯机	Bending Machine	Amada	7
折弯机	Bending Machine	Yangli	2
折弯机	Bending Machine	Meruga	1



设备介绍 Equipments introduction

设备类型	Equipment Type	Quantity
哈格铆钉机	Haeger Reveting machine	3
点焊机	Spot welder machine	5
Amada 铝点焊机	Amada Spot welder machine (aluminum)	1
氩弧焊	Argon welder machine	10
CO ₂ 焊接机	CO ₂ Welder machine	3



设备介绍 Equipments introduction

颢德瑞本厂冲压设备：

设备类型	Equipment Type	Equipment Brand	Quantity
315吨杨力压力机	Punching Machine	Yangli 315 ton	1
160吨杨力压力机	Punching Machine	Yangli 160 ton	2
80吨杨力压力机	Punching Machine	Yangli 80 ton	1
63吨杨力压力机	Punching Machine	Yangli 63 ton	4
16—40吨杨力压力机	Punching Machine	Yangli 16 to 40 ton	40




二、设备介绍 Equipments introduction

家族企业其它冲压生产设备::

设备类型	Equipment Type	Equipment Brand	Quantity
日本AIDA 精密冲床 200T	Precision Punching Machine	Japan AIDA 200T	3
日本JANECO油压冲床200T	Hydraulic press	Japan JANECO 200T	3
高速精密冲床125T-260T	High speed precision press	China 125T—260T	4
数控液压拉伸机 40T-500T	CNC hydraulic stretching machine	40T—500T	20
压力机 60T-160T	Punching Machine	60T—160T	120



一、Amada激光切割机（功率：4千瓦）图片介绍： **Picture of laser cutting machine of 4 KW power**

	设备名称： Device name	飞行光路激光切割机 Flying optical path of laser cutting machine
	设备型号： Equipment type	Amada FO3015NT(4千瓦)
	设备数量： Quantity	1台


镭射机加工范围 Laser machining range:

材料 Material	厚度 Thickness
SPHC	≤20mm
SUS	≤10mm
SPCC	≤20mm
AL5052 3003	≤6. 0mm



二、Amada AC2510数控冲床图片介绍：
AC2510 CNC punching machines

Picture of Amada

	设备名称: Divce name	数控冲床 CNC punching machines
	设备型号: Equipment type	Amada AC2510
	设备数量: Quantity	6台

数控机加工范围: Working range:

材料厚度 ≤3.2mm

Material thickness ≤3.2mm



三、Amada折弯机 图片介绍：Picture of Amada Bending machine

	设备名称： Dvice name	折弯机 Bending machine
	设备型号： Equipment type	Amada RG100
	设备数量： Quantity	6

折弯机加工范围 Bending range:

材料长度 \leq 3100mm

Material length \leq 3100mm



设备名称: Device name	折弯机 Bending machine
设备型号: Equipment type	Amada RG35S
设备数量: Quantity	2台


折弯机加工范围 Bending range:

材料长度 \leq 1250mm

Material length \leq 1250mm



四、杨力折弯机3台图片介绍：
Picture of Yangli Bending machine

	设备名称: Device name	折弯机 Bending machine
	设备型号: Equipment type	Yangli MB8-160*4200
	设备数量: Quantity	2台


折弯机加工范围 Bending range:

材料长度≤4200mm

Material length≤4200mm



五，Amada直流式点焊机 图片介绍： Amada DC Spot Welder machine's picture：

	设备名称： Device name	直流式点焊机 Amada DC Spot Welder machine
	设备型号： Equipment type	Amada ID40ST
	设备数量： Quantiy	1台

Spot Welder's characteristic：

short time, stable welding, wide range, program memory, digital control , a variety of materials welded (aluminum, stainless steel, iron)。

Max short circuit current: 20kA


pressure: 5kN (500kgf)

working depth: 600mm



六，铆钉机 图片介绍：

Riveting—machine’s picture：

	设备名称： Device name	哈格H618 铆钉机 HAEGER H618 riveting machine
	设备型号：Equipment type	C-618PLUS-H
	设备数量： Quantity	3台

Riveting—machine’s characteristic：

- 1, 6 tons (54kN) stamping load , 18 inch (457mm) throat depth
- 2, Reliability, high-performance, full hydraulic drive
- 3, with Haeger's patented safety system
- 4, full hydraulic drive
- 5, can be set to different loading time
- 6, can be put pressure on any point of stroke .



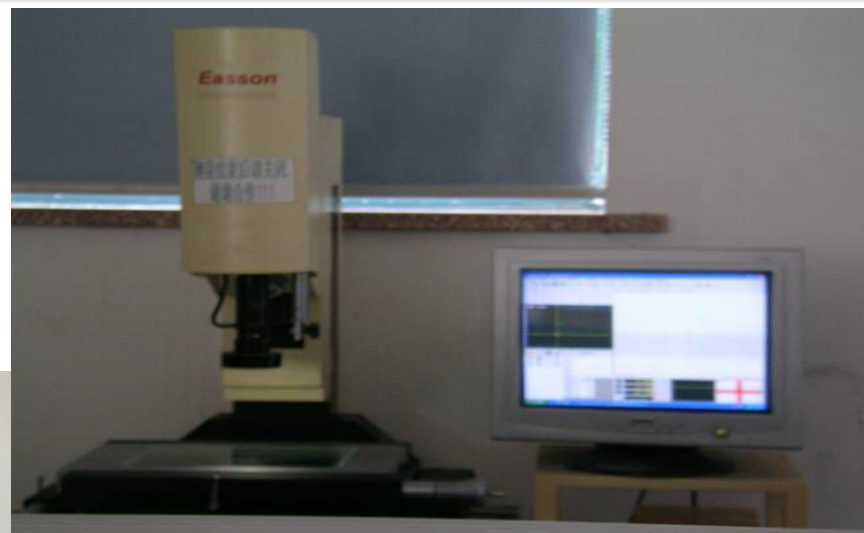
Certification & Recognition



Quality Assurance



3D CMM



2D Projector



Salt Spray Test Machine



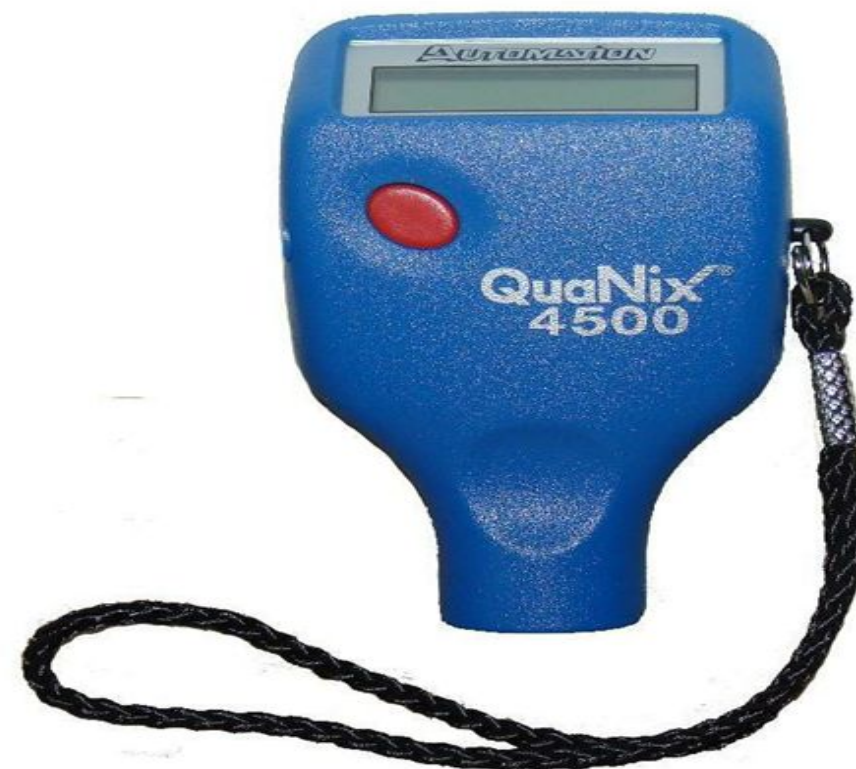
Certification & Recognition



Quality Assurance



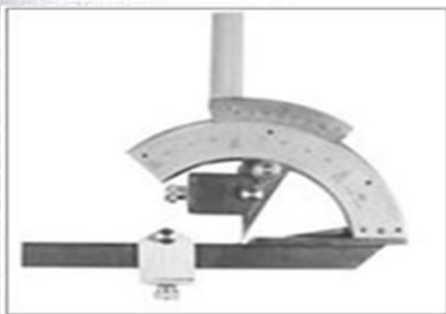
Colorimeter



Coating Thickness Gauge



其它检测设备 Other measurement Equipment :



角度尺
bevel-protractor



数显高度尺
Digital Height Ruler



百分表
dial indicator



千分尺
micrometer



表盘扭力扳手
torque wrench



卡尺
calliper



塞尺
filler gauge

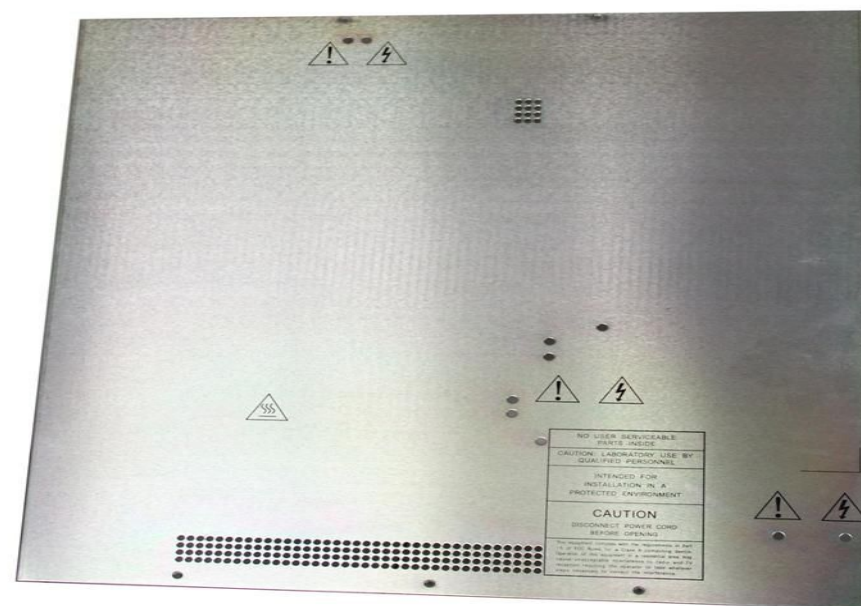
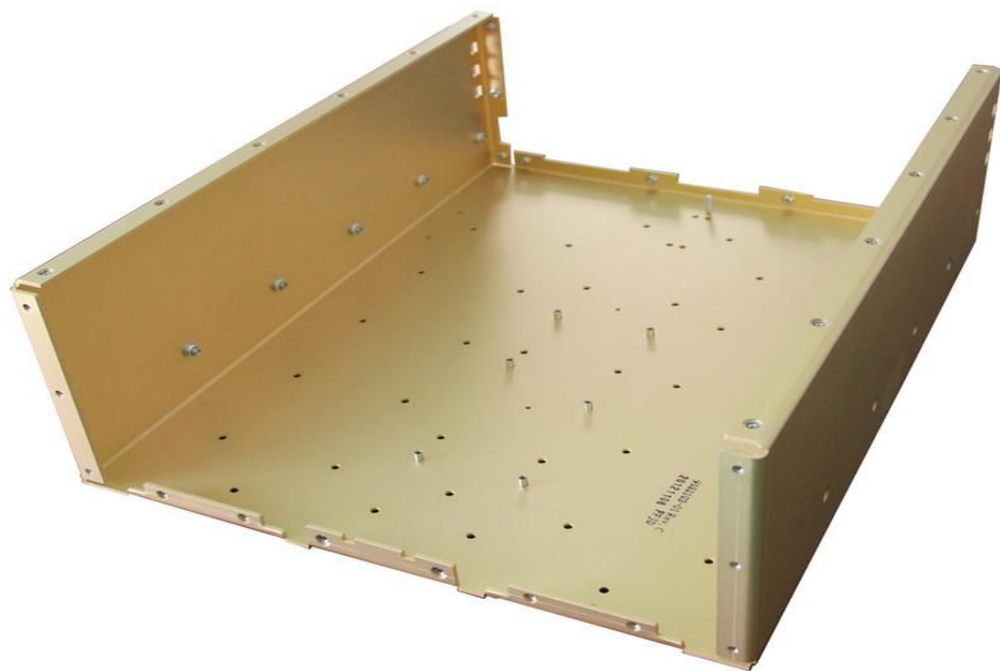


三、产品介绍 Products introduction



钣金件系列产品:

Sheet metal products



机箱外壳
Chassis shell



钣金件系列产品:

Sheet metal products



机箱机柜

Chassis cabinets sheet metal



钣金件系列产品:

Sheet metal products



轨道安全门
Railway security door series





钣金件系列产品：

Sheet metal products



冷链产品
Cold chain products



钣金件系列产品：

Sheet metal products



冷链产品
Cold chain products





钣金件系列产品:

Sheet metal products



精密设备
Precision equipment



钣金件系列产品：

Sheet metal products



物联网产品
Networking products

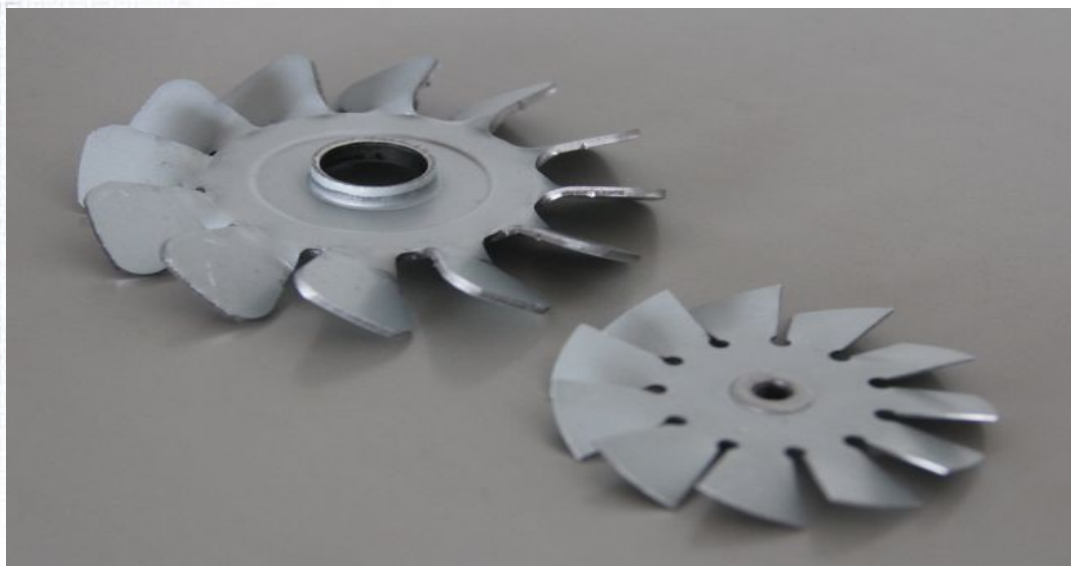




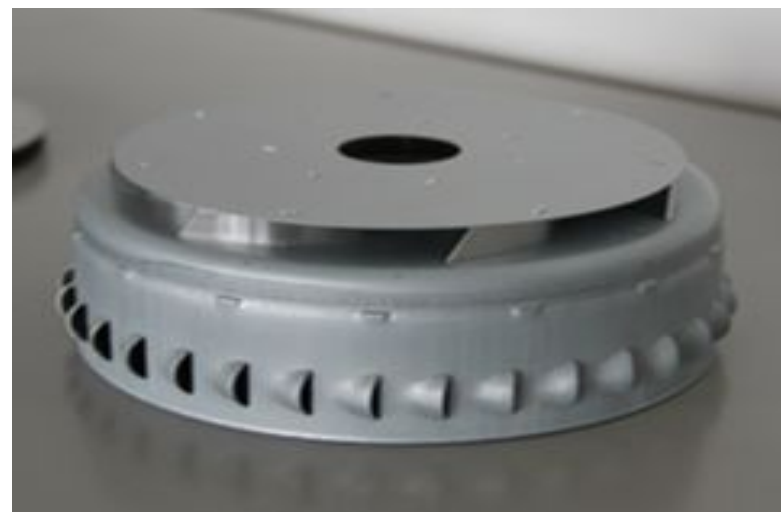
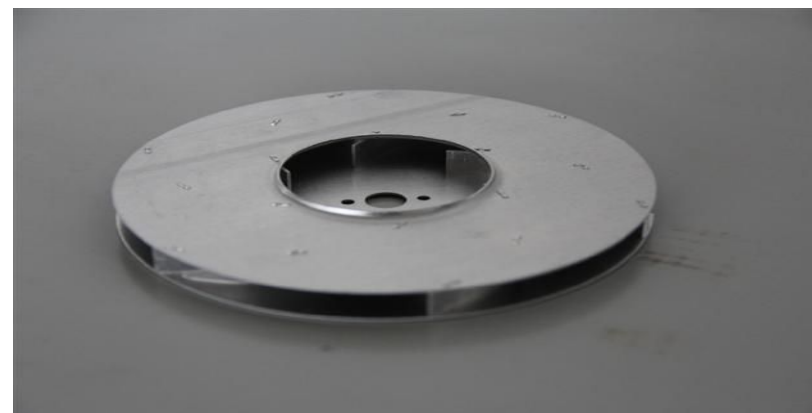
三、产品介绍 Products introduction

冲压系列产品：

Stamping products



电机部件
The Moto parts





冲压系列产品:

Stamping products

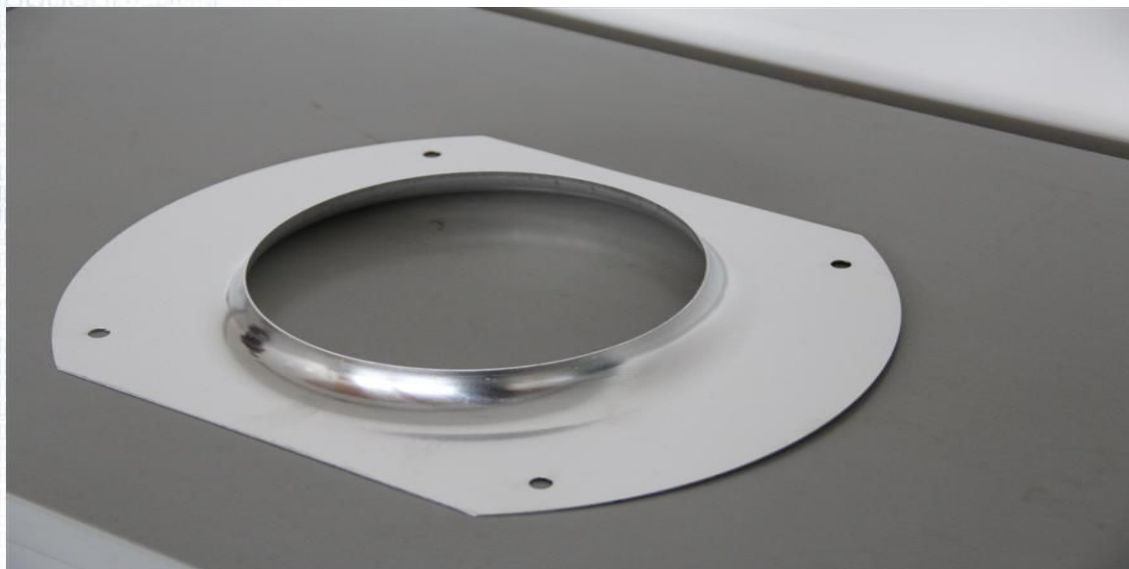


电动工具
Electric tool



冲压系列产品：

Stamping products





冲压系列产品：

Stamping products





Thanks for watching!

Q&A

Suzhou Houdry Mechanical & Electrical Technology Co.,Ltd

Email:sales4@houdry.com.cn

Ph:+86-18262205313

Tel:0086-512-66212961

Fax:0086-512-66212961

Skype:alicedong123

Wechat:DHQ1195809558