

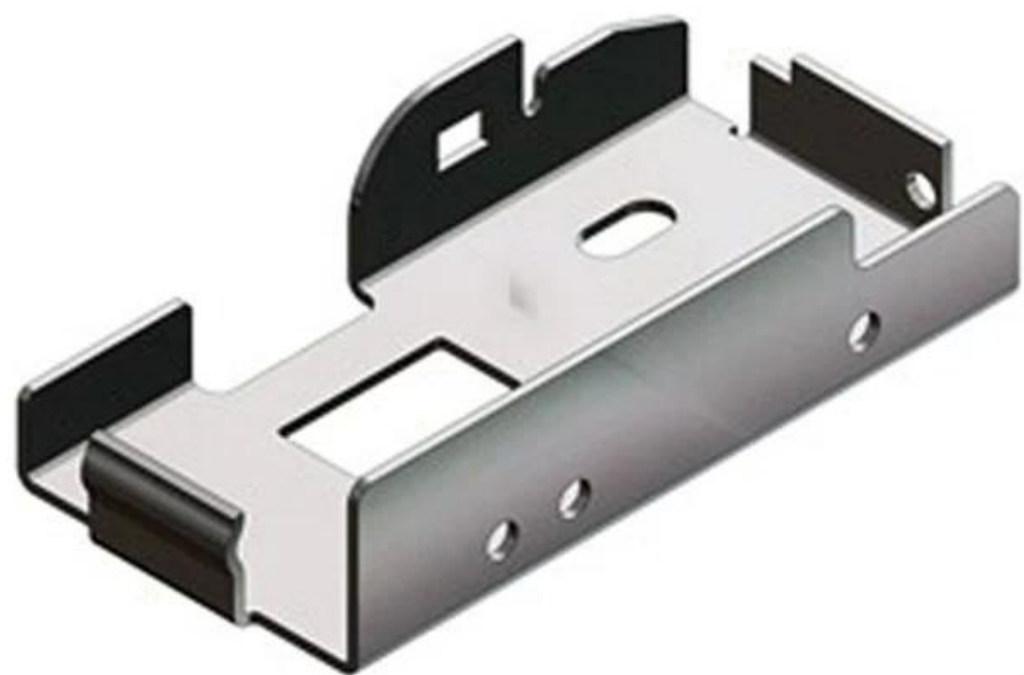
Embalagem e entrega

Embalagem	caixa segura caso ou caso de madeira
Tempo de entrega	7-20 dias

Descrição do produto

Nome do item:	fabricação do metal da folha
material	aço inoxidável
processo	perfuração
tratamento de superfície	polimento
espessura	2.0 mm
tolerância	0.01-0.mm
embalagem	caixa segura caso ou caso de madeira
certifacate	ISO 9001
transporte	shipment do mar
tern do pagamento	ordem do punho: t/t 30% adiantado, t/t 70% de encontro à cópia de B/l ou de L/C
mercado principal	América do Norte, Europa Ocidental, Austrália

Imagem do produto





Nosso serviço

Item	Fabricação do metal da folha do OEM/ODM
Todos material	aço inoxidável/alumínio/SPCC/SECC/UC/SGCC/SHCC, etc.
Todo o processo de fabricação	corte/carimbo do laser/dobrando/Tapping/rebitando/soldadura, etc.
Tratamento de superfície do produto	anodização/pó revestido/Millor que lustra/chapeamento/desenho do fio, etc.
Tolerância do produto	0.01 mm-0.1 mm

Nossa fábrica





Certificado



Obtained Patents

Perguntas Frequentes

FAQ-The questions you may concern

1.Q:Do you have the products in stock?

A:NO,we are OEM/ODM factory, do not have stock, we only produce accroding to customer's drawing and sample.

2.Q:Which kind of material you can produce?

A:For most metal parts,includ steel,stainless steel,aluminum.brass,copper,carbon steel,etc

3.Q:Can you do surface treatment?

A:Yes,we have mature professional cooperation surface treatment factory,provide powder coating,anodizing,zinc-plating ,plating. silk screen,etc.

4.Q:How do you deal with the quality control?

A:We have 3D CMM,2D projector,salt spray test machine,colorimeter,coating thickness gauge and other measurement equipment,18 quality managements to ensure the products 100 qualified before shipment

5.Q: How do you do the packaging? does the price of product include the packaging?

A:Usually we use carton box,and add pallets and film or wooden box according to the products character or customer request,the price include packaging

6.Q:Can you give me the sample?

A:Yes,we can provide free sample less than 20 dollars,however,the shipment cost should be charged by you

7.Q:How to get a formal effective quotation?

A:According to your sample or drawing,product quantity, we can within 48 hours to provide you effective quotation

8.Q:Can you provide material certificates,treatment certificates and dimensional reports?

A:Yes.the certificates canbe provides per request before B/L by email.

9.Q:What software you can accept for the inquiry drawing?

A:JPG,PDF, CAD Solid works, UG ,Pro/E ,etc.

10.Q: What is the main machine in your factory ?

A: Laser curring, NCT punching, bengding machine haeger riveting machine spot welder machine amade spot welder machine (aluminum).Argon welder machine,CO2 wdlder machine ,punching machine etc.