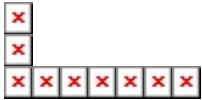


Cheap Stand Up Desk Adjustable Height ,Height Adjustable Standing Desk

THE PARAMETERS OF STANDING DESK

| | |
|----------------------|---|
| Product Name | Electric Height Adjustable Standing Desk |
| Input Voltage | AC 90—240V can use |
| Output Voltage | DC 24V |
| Dynamic Load (KG) | 120 |
| Static Load (KG) | 140 |
| Load Speed (mm/s) | 30 |
| Duty Cycle | 10% max 2 min, continuous use |
| Lift Range | 620-1270mm |
| Length Range | 1100-1600mm |
| Color | Black, White, Gray or option |
| Tube Material | Carbon Steel Q235, Surface :Powder coated |
| Certificate | CE, UL, E0 , ROHS |
| Package Size per set | 1080*270*325mm |
| Net Weight per set | 41KG |
| Gross Weight per set | 45KG |
| Motors Number | TWO |
| Feature: | Switch power supply , low energy consumption ,manual device can move and long press ,built-in limit switch. |

Standing desk picture:





A6 series

The appearance of the more beautiful
 2 legs / 2 motors
 Electric adjustable
 Super mute motor synchronization control system
 Colours can choose Frosted Black or Frosted White
 Overload and overheat protection
 The switch can press point move and press always move

High quality cold-rolled steel plate, the structure is strong
 A number of patented technology

Voltage: 110 VAC /220 VAC
 Gross weight: 38KG

Lifting range from 580mm-1240mm
 Can use desktop from 1100mm-1600mm
 Load capacity: 100kg / 225lbs
 Load Speed: 30mm/s

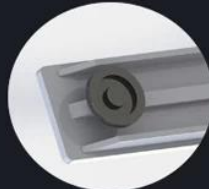
5 Advantage



Out Tube size can be 90mmX60mm



Control box installation: Plug type
 Patent design,It is more convenient



Foot to strengthen



Motor metal case Ultra-thin design



Control box patent design, Ultra-thin,small
 Switching power supply
 Metal case,have qualitative feeling

Application

